



## ON THE RANCH NEWSLETTER – MAY 11, 2018

[www.PalmerRanch.net](http://www.PalmerRanch.net)

### **HAPPY MOTHER'S DAY!**

A mom's hug lasts long after she lets go. Wishing all moms a Happy Mother's Day from the Master Association office!



### **NATIONAL PEACE OFFICERS MEMORIAL DAY AND POLICE WEEK**

In 1962, President Kennedy signed a bill proclaiming **May 15 as National Peace Officers Memorial Day** and the calendar week in which May 15 falls, as **National Police Week**. Established by a joint resolution of Congress in 1962, National Police Week pays special recognition to those law enforcement officers who have lost their lives in the line of duty for the safety and protection of others. In 1994 an amendment was made to the bill directing that the United States flag be flown at half-staff on May 15.

### **FLAGS WILL BE FLOWN AT HALF-STAFF ON PALMER RANCH – TUESDAY, MAY 15<sup>TH</sup> FROM SUNRISE TO SUNSET IN HONOR OF OUR FALLEN PEACE OFFICERS**

We at Palmer Ranch cannot give enough thanks to our local law enforcement officers for putting their lives on the line every day, for each one of us.



### **News You Can Use**



### **INSTALLATION OF ANNUAL FLOWERS**

The summer change out of annual flowers at entries to Palmer Ranch is scheduled next week, with mixed purple, pink and white Pentas. The colorful Pentas will be installed at directional signs within the Community. Please be aware of workmen in these areas.

### **PALMER RANCH DEMOGRAPHICS SURVEY RESULTS**

The Palmer Ranch demographics survey results are now posted on our Palmer Ranch website! Visit [www.palmerranch.net](http://www.palmerranch.net), click on the resources tab, then click on the documents tab, scroll to the bottom of the documents folder to review the full results of the survey!



### **STONEBROOK GOLF & COUNTRY CLUB IS HOSTING MOTHER'S DAY BRUNCH - FLYER ATTACHED**



Stoneybrook Golf & Country Club is hosting Mother's Day Brunch this **Sunday, May 13<sup>th</sup> from 10:00am to 3:00pm**. Cost is \$32.95++ (adults), \$16.95++ (children under 10). No blue jeans permitted. Stoneybrook Golf and Country Club is located at 8801 Stoneybrook Blvd. For more information please call (941) 918-9595 or email: [kathleen@stoneybrookgcc.com](mailto:kathleen@stoneybrookgcc.com).



## ON THE RANCH NEWSLETTER – MAY 11, 2018

[www.PALMERRANCH.NET](http://www.PALMERRANCH.NET)

---

### GREEN TEAM EVENT AT THE GLENRIDGE

Green Team at the Glenridge on Palmer Ranch invites you to a presentation by Max Corley from the Friends of the Legacy Trail. Opened in 2008, the trail is a popular oasis for walkers, runners, and cyclists. Mr. Corley will discuss plans to extend the trail by 6.5 miles. This presentation will take place on **Monday, May 14<sup>th</sup> at 10:30 AM** in The Performing Arts Center at the Glenridge on Palmer Ranch, 7333 Scotland Way. This event is free and the public is welcome. Please contact Susan Button at [susanvinalbutton@gmail.com](mailto:susanvinalbutton@gmail.com) with any questions about this event.



### HERON CLUB AT PRESTANCIA - HOSTING AN ALZHEIMER'S SUPPORT GROUP

Heron Club, located at 3749 Sarasota Square Blvd., is hosting an Alzheimer's Support Group. Their next meeting will be on **Tuesday, May 15<sup>th</sup> at 10:30am**. For more information or to RSVP, contact Laurie Blackwell at (941) 922-1669.

### NOTICE OF NEIGHBORHOOD WORKSHOP - **SEE ATTACHED**

### BROOKDALE DEER CREEK – COMMUNITY BLOOD DRIVE

Brookdale Deer Creek Sarasota will be hosting a community blood drive on **Monday, May 21<sup>st</sup> from 1-5pm** at 8450 McIntosh Rd. For more information please call Chelsea at (941) 376-5666.



### **UF/IFAS Sarasota County Extension Classes**

The following classes are all held at the UF/IFAS Sarasota County Extension, Twin Lakes Park, 6700 Clark Road. For more information on these events, call (941) 861-5000 and ask for the Sarasota County Extension.

### HAPPY WITH YOUR HOA LANDSCAPE?

Learn practices and procedures for renovating homeowners association landscaping the Florida-Friendly way. Get advice and tips on plants, irrigation, invasive plants, weeds, pruning, fertilizing, watering, mulching, maintenance, and more. Class will be held on **Monday, May 21<sup>st</sup> from 10:00am-11:30am**. For more information and to sign up visit <https://www.eventbrite.com/e/happy-with-your-hoa-landscape-tickets-42885212826>.

### MANATEES EXPLORED

Join Armando Ubeda, Sea Grant Agent with UF/IFAS Extension Sarasota County and a Nicaraguan-born marine biologist, as he presents a wealth of information about the West Indian manatee and the Florida manatee. Armando's presentation will cover some of his work with manatees in Central America and Mexico, the present status of the Florida manatee, and evolutionary adaptations of this magnificent aquatic herbivore. Class will be held on **Wednesday, May 23<sup>rd</sup> from 10:00am-12:00pm**. For more information and to sign up visit <https://www.eventbrite.com/e/manatees-explored-tickets-45776293125>.



## ON THE RANCH NEWSLETTER – MAY 11, 2018

[www.PalmerRanch.net](http://www.PalmerRanch.net)

---



### ARTISTS OF PALMER RANCH - PRESS RELEASE

The *Artists of Palmer Ranch* are pleased to announce that their works will be on display and for purchase in the Gulf Gate Library Bookstore, 7112 Curtiss Ave.

May's showcased artist is Donna Janec Karambelas. Donna's acrylics and watercolors are gorgeous.

Do plan to stop by!

### On The Grounds

#### 'SHADY LADY' BLACK OLIVE (BUCIDA BUCERAS)

The exquisite Shady Lady tree, commonly known as the black olive, with its lush layers of tiny leaves is quite beautiful. Rather bushy, its dense foliage makes it an excellent tree for shade, yet it is relatively easy to maintain. The Shady Lady can reach astounding heights of up to 50 feet and features a frosting of small yellow flowers while blooming. The "black olive" name can be misleading, as this tree is not actually an olive tree and does not produce the edible black olive fruit. This sturdy and stunning tree is salt tolerant, and loves the hours of sunlight provided by the Florida climate.



Eight Shady Ladies greet travelers as they approach Palmer Ranch from the south along the east side of Honore Avenue in the area that is maintained by the Palmer Ranch Master Association, just before the monument sign near Isles of Sarasota.

Sign Up For Our Newsletter

Do you want to hear about the news on Palmer Ranch first hand? If so, simply visit our website: [www.PalmerRanch.net](http://www.PalmerRanch.net). At the bottom of the home page, simply click on 'Sign Up For Our Newsletter.'

You'll then be asked to provide your email address and first name. It's that easy!

---

#### Palmer Ranch Master Association – Mission Statement

*'Our mission is to enhance and maintain the aesthetic quality of Palmer Ranch and to preserve the overall unique identity and sense of community.'*





# *Mother's Day* BRUNCH

**Sunday, May 13, 2018**  
**10:00am-3:00pm**

Omelet Station &  
Breakfast Specialties  
Made to order

Fresh Fruit Mirror  
Scrambled Eggs, Eggs Benedict  
Applewood Bacon  
Breakfast Sausage

Freshly Baked Buttermilk Biscuits  
with Sawmill Gravy

Composed Bistro Salads  
Poached Shrimp  
Antipasto Platter

Sour Cream Mashed Potatoes  
Market Vegetables  
Wild Rice

Carved Certified  
Angus Beef Strip Loin  
Glazed Smoked Pit Ham

Salad Bar Featuring:  
Field fresh greens, Assorted Toppings,  
and Home made Dressings

Waffle Bar with Toppings

Oven Roasted Salmon with  
Sun Dried Tomato Beurre Blanc

Dessert Display  
With Pastries, Pies, Sticky Buns  
Cookies and Eclairs

**\$32.95++ (adults) \$16.95++ (children under 10 )**

Please call 941-918-9595 for Reservations

No Blue Jeans Permitted



## NEIGHBORHOOD WORKSHOP

**Date:** Tuesday, May 15, 2018  
**Time:** 6:00 pm  
**Place:** Covenant Life Church, 8490 McIntosh Road, Sarasota, Florida  
**Contact:** Shelley Hamilton, Senior Planner, STANTEC (941-907-6900)  
Joel Freedman, SHUMAKER ADVISORS (941-780-2623)

The Agents, Ms. Shelley E. Hamilton and Mr. Joel Freedman, will be holding this workshop to discuss the proposed development of the property. The following applications will be discussed:

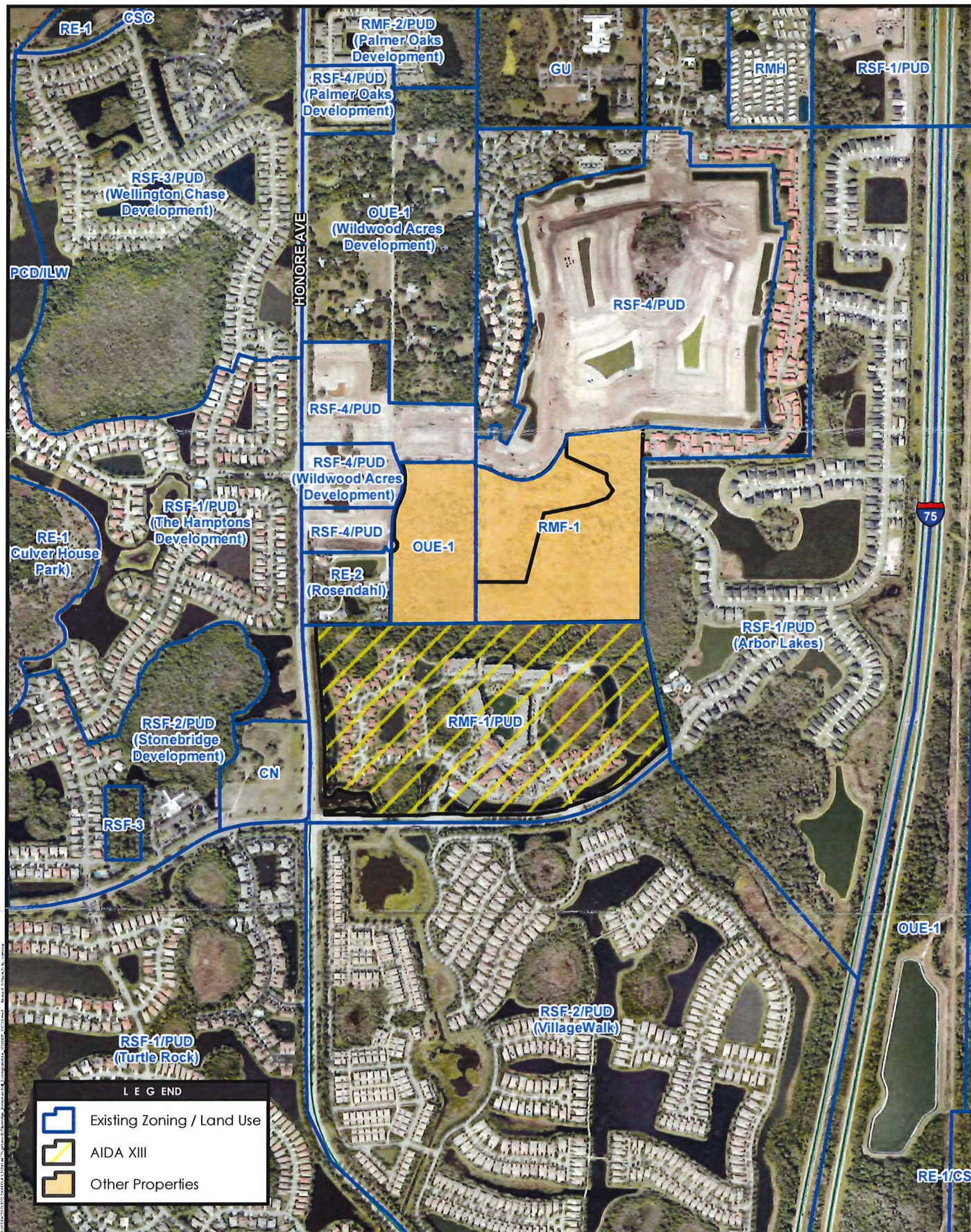
- An Application for a Notification of Proposed Change to the previously adopted Palmer Ranch Increment XIII (The Glenridge on Palmer Ranch, Ordinance No. 98-081) Development of Regional Impact;
- An amendment to the approved rezone petition (RP 98-21, Ordinance No. 98-082) for 89 acres  $\pm$  currently developed as The Glenridge on Palmer Ranch. The application will amend the zoning from RMF-1/PUD (Residential, Multi-Family, 6 units per acre/Planned Unit Development) with stipulations to RMF-1/PUD with amended stipulations in order to expand the assisted living units, to expand the skilled nursing units, to expand the skilled nursing rehabilitation, to expand the fitness center, to expand the assisted living and skilled nursing dining areas, to expand the dining and kitchen capacity in the "Kiltie Café", to provide additional parking, and to add access locations along the northern property boundary of The Glenridge facility to allow access to the existing facility for the newly acquired property to the north of the existing facility (see next application); and
- An application to rezone 19.68 acres  $\pm$  located north of The Glenridge on Palmer Ranch property and approximately .13 miles east of Honore Avenue. This property will be rezoned from OUE-1 (Open Use Estate, 1 unit per 5 acres) to RSF-4 (Residential Single Family, 5.5 units per acre). This will allow the future expansion of The Glenridge to allow between 40 and 50 residential units.

The aerial, and "draft" development concept plan, enclosed, demonstrates the location of both the existing facility and the proposed addition.

This Neighborhood Workshop is not a public hearing. The purpose of the meeting is to inform neighboring residents of the nature of the proposal, to discuss the concept plan and to seek comments. We look forward to seeing you there. If you have questions, please contact Shelley Hamilton, at 941-907-6900 or Joel Freedman at 941-780-2623. For more information, please also feel free to visit <http://www.scgov.net/PlanningServices/Pages/Workshops.aspx>.

Sarasota County prohibits discrimination in all services, programs or activities on the basis of race, color, national origin, age, disability, sex, marital status, familial status, religion, or genetic information. Persons with disabilities who require assistance or alternative means for communication of program information (Braille, large print, audiotape, etc.), or who wish to file a complaint, should contact: Sarasota County ADA/Civil Rights Coordinator, 1660 Ringling Boulevard, Sarasota, Florida 34236, Phone: 941-861-5000, TTY: 7-1-1 or 1-800-955-8771, Email: [adacoordinator@scgov.net](mailto:adacoordinator@scgov.net).





Disclaimer: Stantec assumes no responsibility for data supplied in electronic format. The recipient accepts full responsibility for verifying the accuracy and completeness of the data. The recipient releases Stantec, its officers, employees, consultants and agents, from any and all claims arising in any way from the content or provision of this data.

# Palmer Ranch - Increment XIII The Glenridge - Aerial Map and Existing Zoning/Land Use April 2018

Stantec Consulting Services Inc.  
370 Interlocken Blvd, Suite 300  
Broomfield, CO 80021  
tel 303.410.4000  
fax 303.410.4100



Prepared by: CAA 04/20/18





- SITE NOTES**
- P.I.D. 0117010021, MANDARIN ROAD, SARASOTA 34238  
AREA = 857,209 S.F.  
ZONING: OUE (OPEN USE ESTATE) (TO BE REZONED)
  - P.I.D. 011700010, SARASOTA, 34238  
AREA = 910,858 S.F.  
ZONING: RMF-1 (RESIDENTIAL MULTI-FAMILY)
  - P.I.D. 009620013, DRAW LANE, 34238  
AREA = 1,118,674 S.F.  
ZONING: RMF-1 (RESIDENTIAL MULTI-FAMILY)
  - TOTAL AREA: 2,586,841 S.F. OR 59.39 AC.
  - LANDSCAPE BUFFERS: 30'
  - TOTAL WETLAND AREA: 587,808 S.F. OR 13.49 AC.
  - TOTAL LAKE AREA: 418,892 S.F. OR 9.61 AC.
  - AMENITY AREA: 53,745 S.F. OR 1.46 AC.

<div style="display: flex; align-items: center;"> <div style="font-size: 2em; margin-right: 10px;">M</div> <div> <b>MORRIS ENGINEERING AND CONSULTING, LLC</b>              Civil Engineering and Land Development Consulting  <small>4997 Professional Park, Suite B, Lakewood Ranch, Florida 33501 P.O. 28740 981-444-0668 www.morrisengineering.net</small> </div> </div>		<div style="display: flex; flex-direction: column;"> <div>DATE: 04-05-18</div> <div>PROJECT: GLENRIDGE</div> <div>DRAWING: 04-05-18</div> <div>DRAWN: DBH</div> </div>		<div style="display: flex; flex-direction: column;"> <div>CHECKED: NAM</div> </div>		<div style="text-align: center;">             CONCEPTUAL SITE PLAN (84 LOTS &amp; AMENITY CENTER)  <b>GLENRIDGE</b>              SARASOTA COUNTY, FLORIDA         </div>		<div style="display: flex; flex-direction: column;"> <div>SCALE: NOT TO SCALE</div> <div>SEC - TSP - RMC - 365-18C</div> <div>SHEET 1 OF 1</div> </div>																																							
<table border="1"> <thead> <tr> <th>NO.</th> <th>DATE</th> <th>REVISION DESCRIPTION</th> <th>BY</th> </tr> </thead> <tbody> <tr><td> </td><td> </td><td> </td><td> </td></tr> <tr><td> </td><td> </td><td> </td><td> </td></tr> <tr><td> </td><td> </td><td> </td><td> </td></tr> <tr><td> </td><td> </td><td> </td><td> </td></tr> <tr><td> </td><td> </td><td> </td><td> </td></tr> <tr><td> </td><td> </td><td> </td><td> </td></tr> <tr><td> </td><td> </td><td> </td><td> </td></tr> <tr><td> </td><td> </td><td> </td><td> </td></tr> <tr><td> </td><td> </td><td> </td><td> </td></tr> <tr><td> </td><td> </td><td> </td><td> </td></tr> </tbody> </table>		NO.	DATE	REVISION DESCRIPTION	BY																																									<div style="text-align: right;">             MATTHEW J. MORRIS  <small>FL. LICENSE NO. 88434</small> </div>	
NO.	DATE	REVISION DESCRIPTION	BY																																												